



# Casino Security & Performance Report of casinok.com

Powered by [NightRush.com](https://NightRush.com)

<b>Domain:</b>	casinok.com
<b>Report Generated:</b>	2026-05-13 08:47:47
<b>Report ID:</b>	F015D15EBEAC9A83

## VirusTotal Analysis

<b>Reputation:</b>	0 (Neutral)
<b>Security Vendors:</b>	92 vendors analyzed
<b>Harmless:</b>	58
<b>Malicious:</b>	0
<b>Suspicious:</b>	1
<b>Undetected:</b>	33
<b>■■ WARNING:</b>	1/92 vendors flagged this domain

## TLS/SSL Information

<b>TLS Version:</b>	TLSv1.3
<b>Cipher Suite:</b>	TLS_AES_256_GCM_SHA384
<b>SSL Issuer Organization:</b>	Google Trust Services

# Google Safe Browsing

<b>Status:</b>	■ Safe (No data available - considered safe)
----------------	--

# Google CrUX (Chrome User Experience)

*Overall Rating: Poor*

*Current Performance Status:*

<b>Loading Performance:</b>	Poor
<b>Interactivity:</b>	Needs Improvement
<b>Visual Stability:</b>	Poor

*Historical Trend Analysis:*

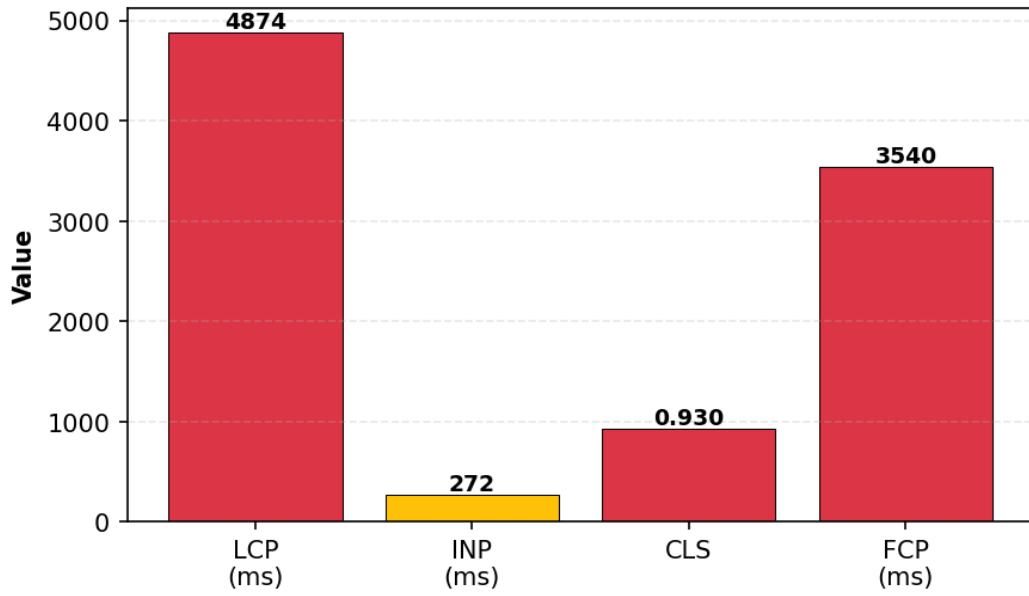
<b>Loading Performance Trend:</b>	Stable
<b>Interactivity Trend:</b>	Stable
<b>Visual Stability Trend:</b>	Stable

*Current Metrics:*

<b>LCP (Largest Contentful Paint):</b>	4874 ms (Poor)
<b>INP (Interaction to Next Paint):</b>	272 ms (Needs Improvement)
<b>CLS (Cumulative Layout Shift):</b>	0.930 (Poor)
<b>FCP (First Contentful Paint):</b>	3540 ms (Poor)

*Current Metrics Visualization:*

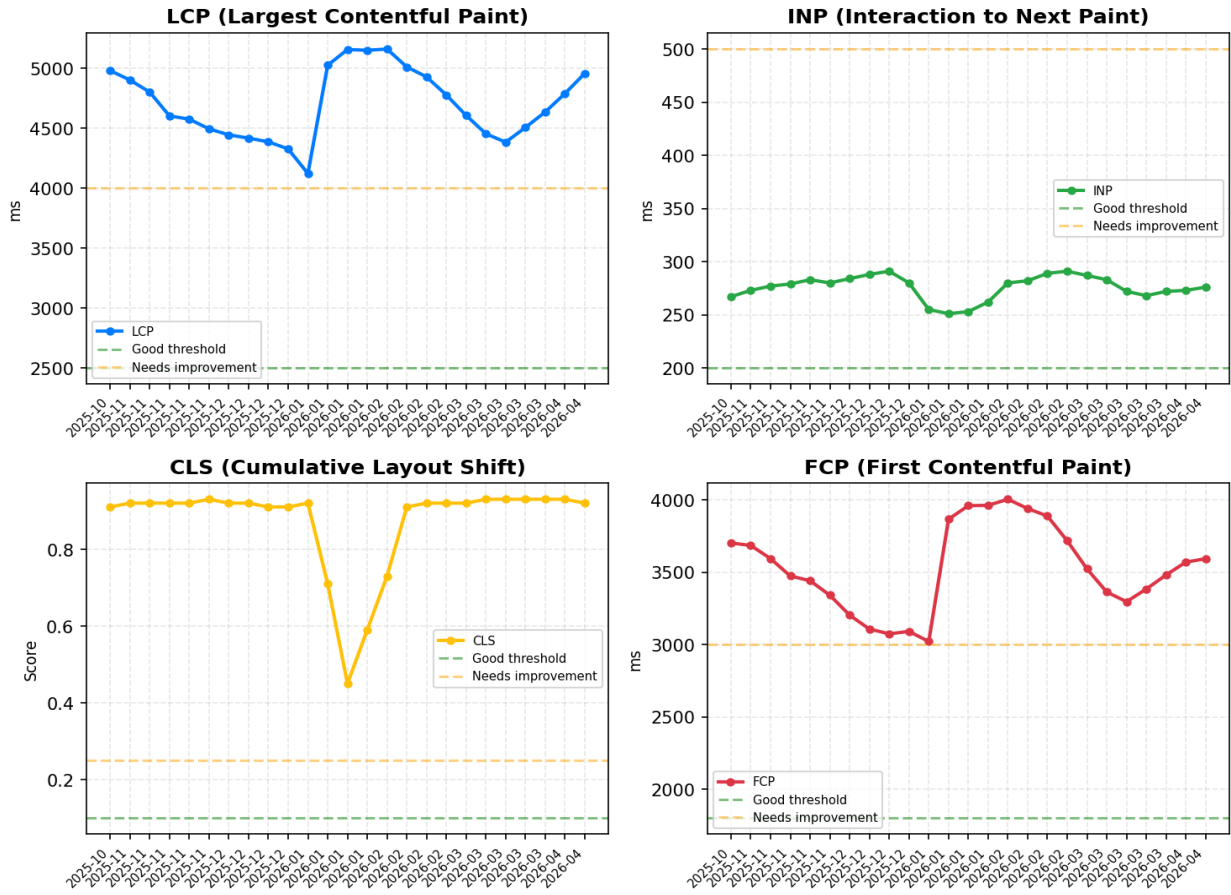
### Current Core Web Vitals Metrics



*Historical Data (25 periods):*

*Historical Trends Visualization:*

## Historical Core Web Vitals Trends



### Period Details:

Period	LCP (ms)	INP (ms)	CLS	FCP (ms)
2025-10-26	4978	267	0.910	3702
2025-11-02	4899	273	0.920	3685
2025-11-09	4799	277	0.920	3594
2025-11-16	4600	279	0.920	3474
2025-11-23	4573	283	0.920	3441
2025-11-30	4492	280	0.930	3341
2025-12-07	4442	284	0.920	3203
2025-12-14	4415	288	0.920	3107

2025-12-21	4384	291	0.910	3074
2025-12-28	4325	280	0.910	3091
2026-01-04	4120	255	0.920	3021
2026-01-11	5022	251	0.710	3866
2026-01-18	5153	253	0.450	3960
2026-01-25	5147	262	0.590	3962
2026-02-01	5157	280	0.730	4004
2026-02-08	5008	282	0.910	3940
2026-02-15	4925	289	0.920	3888
2026-02-22	4774	291	0.920	3717
2026-03-01	4604	287	0.920	3523
2026-03-08	4451	283	0.930	3363
... and 5 more periods				

## References & Footnotes

1. VirusTotal: <https://www.virustotal.com/>

VirusTotal aggregates data from multiple security vendors to provide comprehensive domain reputation analysis.

2. Google Safe Browsing: <https://safebrowsing.google.com/>

Google Safe Browsing protects users from malware, phishing, and other threats.

3. Google CrUX (Chrome User Experience Report):

<https://developers.google.com/web/tools/chrome-user-experience-report>

CrUX provides real user measurement data for millions of websites, including Core Web Vitals metrics:

- LCP (Largest Contentful Paint): Measures loading performance
- INP (Interaction to Next Paint): Measures interactivity
- CLS (Cumulative Layout Shift): Measures visual stability
- FCP (First Contentful Paint): Measures initial page load

4. For review criteria and detailed information:

This technical datasheet is based on official data from Google PageSpeed Insights, the Chrome UX Report, and Google Safe Browsing. All measurements reflect the publicly accessible version of the website at the time of scanning and may vary over time. For full criteria and methodology, see:

<https://www.nightrush.com/en/editorial-guideline/#how-we-review-casinos-and-sportsbooks>

5. Report ID: F015D15EBEAC9A83

Report generated on 2026-05-13 08:47:47

This report is based on data available at the time of generation and may not reflect real-time status.