



# Casino Security & Performance Report of luckyhunter.com

Powered by [NightRush.com](https://NightRush.com)

<b>Domain:</b>	luckyhunter.com
<b>Report Generated:</b>	2026-04-01 15:25:45
<b>Report ID:</b>	0BEF7B8B76A51445

## VirusTotal Analysis

<b>Reputation:</b>	0 (Neutral)
<b>Security Vendors:</b>	94 vendors analyzed
<b>Harmless:</b>	61
<b>Malicious:</b>	0
<b>Suspicious:</b>	0
<b>Undetected:</b>	33

## TLS/SSL Information

<b>TLS Version:</b>	TLSv1.3
<b>Cipher Suite:</b>	TLS_AES_256_GCM_SHA384
<b>SSL Issuer Organization:</b>	Google Trust Services

## Google Safe Browsing

<b>Status:</b>	■ Safe (No data available - considered safe)
----------------	--

## Google CrUX (Chrome User Experience)

*Overall Rating: Poor*

*Current Performance Status:*

<b>Loading Performance:</b>	Poor
<b>Interactivity:</b>	Needs Improvement
<b>Visual Stability:</b>	Poor

*Historical Trend Analysis:*

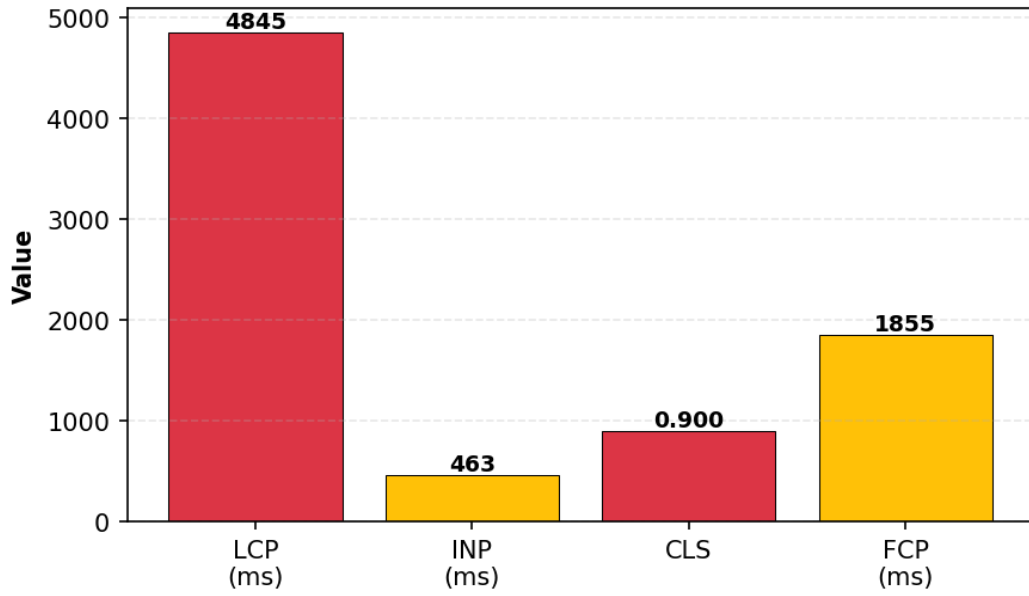
<b>Loading Performance Trend:</b>	Stable
<b>Interactivity Trend:</b>	Stable
<b>Visual Stability Trend:</b>	Stable

*Current Metrics:*

<b>LCP (Largest Contentful Paint):</b>	4845 ms (Poor)
<b>INP (Interaction to Next Paint):</b>	463 ms (Needs Improvement)
<b>CLS (Cumulative Layout Shift):</b>	0.900 (Poor)
<b>FCP (First Contentful Paint):</b>	1855 ms (Needs Improvement)

*Current Metrics Visualization:*

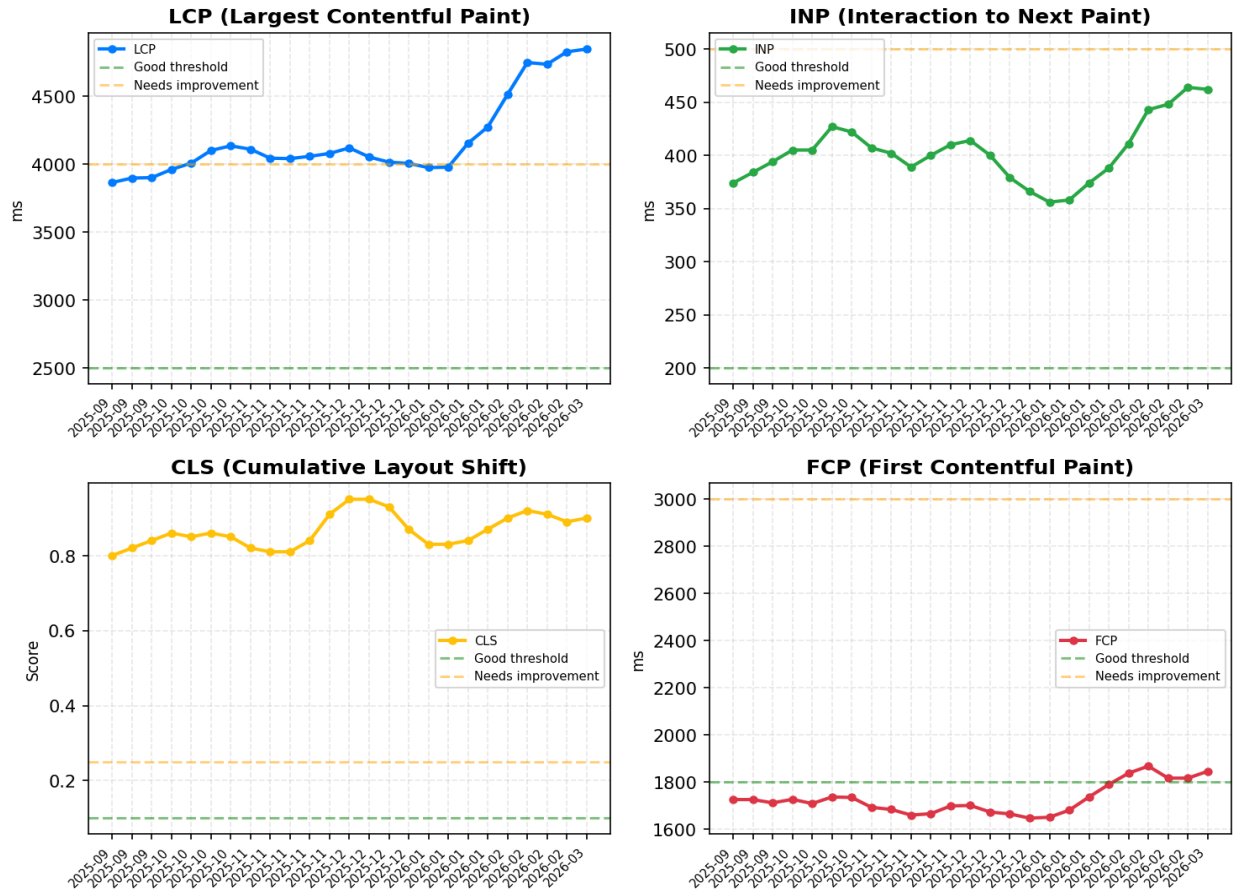
### Current Core Web Vitals Metrics



*Historical Data (25 periods):*

*Historical Trends Visualization:*

## Historical Core Web Vitals Trends



### Period Details:

Period	LCP (ms)	INP (ms)	CLS	FCP (ms)
2025-09-14	3864	374	0.800	1725
2025-09-21	3897	384	0.820	1725
2025-09-28	3900	394	0.840	1711
2025-10-05	3960	405	0.860	1726
2025-10-12	4007	405	0.850	1708
2025-10-19	4100	427	0.860	1736
2025-10-26	4134	422	0.850	1734
2025-11-02	4109	407	0.820	1692

2025-11-09	4043	402	0.810	1683
2025-11-16	4040	389	0.810	1659
2025-11-23	4057	400	0.840	1665
2025-11-30	4078	410	0.910	1698
2025-12-07	4119	414	0.950	1700
2025-12-14	4052	400	0.950	1672
2025-12-21	4014	379	0.930	1664
2025-12-28	4005	366	0.870	1646
2026-01-04	3974	356	0.830	1650
2026-01-11	3977	358	0.830	1680
2026-01-18	4153	374	0.840	1736
2026-01-25	4273	388	0.870	1789
... and 5 more periods				

## References & Footnotes

1. VirusTotal: <https://www.virustotal.com/>

VirusTotal aggregates data from multiple security vendors to provide comprehensive domain reputation analysis.

2. Google Safe Browsing: <https://safebrowsing.google.com/>

Google Safe Browsing protects users from malware, phishing, and other threats.

3. Google CrUX (Chrome User Experience Report):

<https://developers.google.com/web/tools/chrome-user-experience-report>

CrUX provides real user measurement data for millions of websites, including Core Web Vitals metrics:

- LCP (Largest Contentful Paint): Measures loading performance
- INP (Interaction to Next Paint): Measures interactivity
- CLS (Cumulative Layout Shift): Measures visual stability
- FCP (First Contentful Paint): Measures initial page load

4. For review criteria and detailed information:

This technical datasheet is based on official data from Google PageSpeed Insights, the Chrome UX Report, and Google Safe Browsing. All measurements reflect the publicly accessible version of the website at the time of scanning and may vary over time. For full criteria and methodology, see:

<https://www.nightrush.com/en/editorial-guideline/#how-we-review-casinos-and-sportsbooks>

5. Report ID: 0BEF7B8B76A51445

Report generated on 2026-04-01 15:25:45

This report is based on data available at the time of generation and may not reflect real-time status.