



Casino Security & Performance Report of millioner2.com

Powered by NightRush.com

Domain:	millioner2.com
Report Generated:	2026-03-30 11:18:53
Report ID:	209B5AD794B37136

VirusTotal Analysis

Reputation:	0 (Neutral)
Security Vendors:	94 vendors analyzed
Harmless:	60
Malicious:	0
Suspicious:	0
Undetected:	34

TLS/SSL Information

TLS Version:	TLSv1.3
Cipher Suite:	TLS_AES_256_GCM_SHA384
SSL Issuer Organization:	Google Trust Services

Google Safe Browsing

Status:	■ Safe (No data available - considered safe)
----------------	--

Google CrUX (Chrome User Experience)

Overall Rating: Poor

Current Performance Status:

Loading Performance:	Needs Improvement
Interactivity:	Needs Improvement
Visual Stability:	Poor

Historical Trend Analysis:

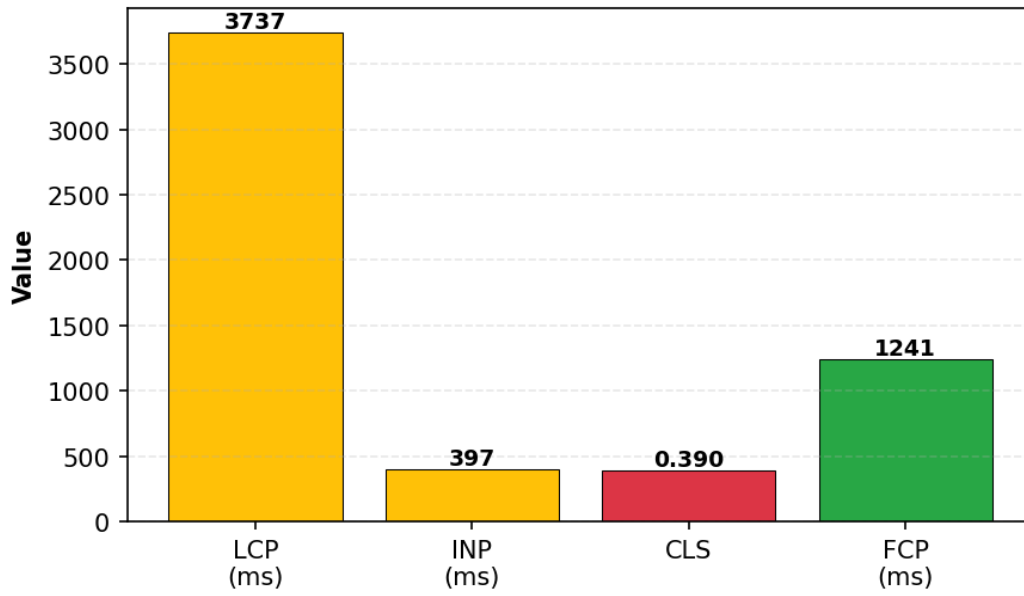
Loading Performance Trend:	Stable
Interactivity Trend:	Stable
Visual Stability Trend:	Regressing

Current Metrics:

LCP (Largest Contentful Paint):	3737 ms (Needs Improvement)
INP (Interaction to Next Paint):	397 ms (Needs Improvement)
CLS (Cumulative Layout Shift):	0.390 (Poor)
FCP (First Contentful Paint):	1241 ms (Good)

Current Metrics Visualization:

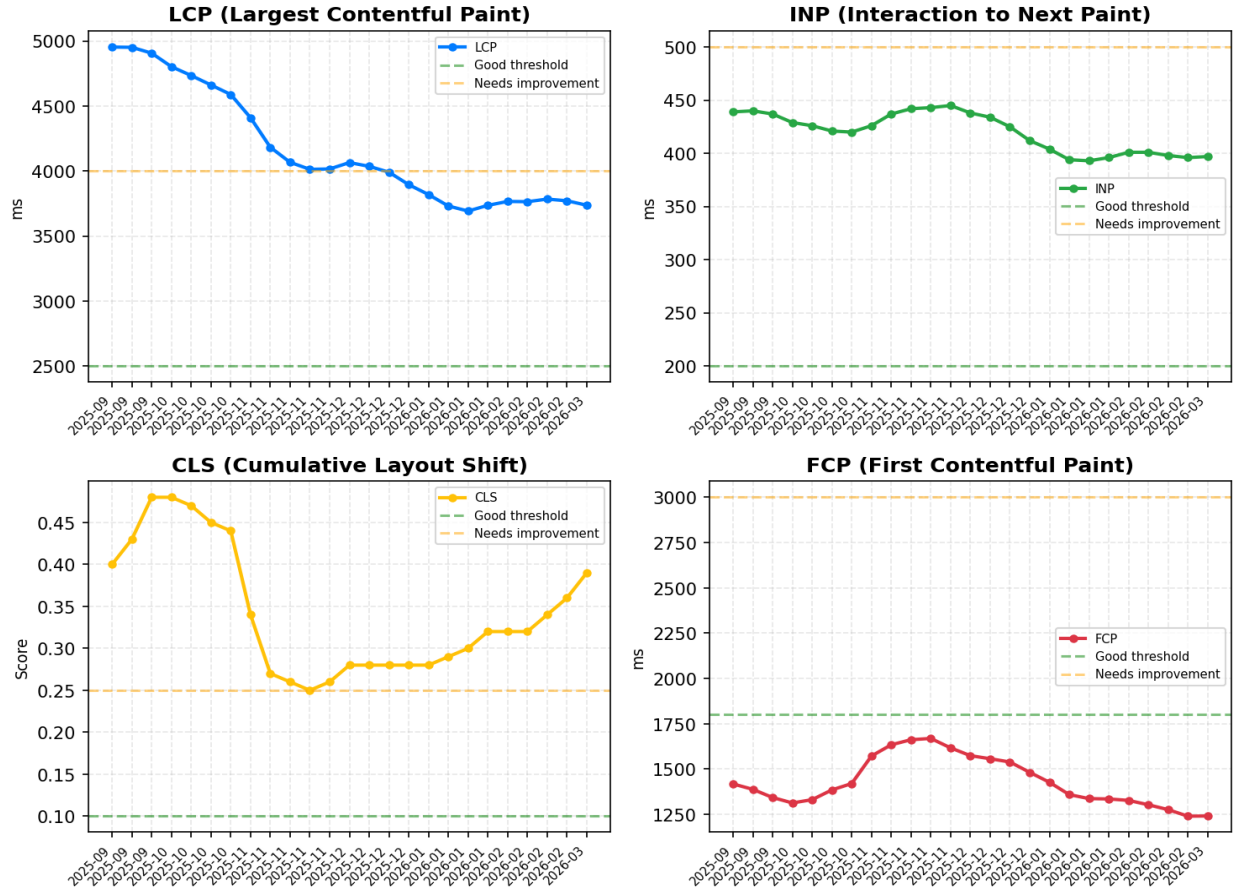
Current Core Web Vitals Metrics



Historical Data (25 periods):

Historical Trends Visualization:

Historical Core Web Vitals Trends



Period Details:

Period	LCP (ms)	INP (ms)	CLS	FCP (ms)
2025-09-14	4954	439	0.400	1418
2025-09-21	4952	440	0.430	1388
2025-09-28	4907	437	0.480	1343
2025-10-05	4803	429	0.480	1313
2025-10-12	4735	426	0.470	1331
2025-10-19	4662	421	0.450	1385
2025-10-26	4589	420	0.440	1420
2025-11-02	4410	426	0.340	1572

2025-11-09	4183	437	0.270	1634
2025-11-16	4067	442	0.260	1662
2025-11-23	4013	443	0.250	1669
2025-11-30	4016	445	0.260	1617
2025-12-07	4065	438	0.280	1574
2025-12-14	4036	434	0.280	1557
2025-12-21	3991	425	0.280	1539
2025-12-28	3895	412	0.280	1482
2026-01-04	3819	404	0.280	1427
2026-01-11	3731	394	0.290	1359
2026-01-18	3692	393	0.300	1337
2026-01-25	3736	396	0.320	1335
... and 5 more periods				

References & Footnotes

1. VirusTotal: <https://www.virustotal.com/>

VirusTotal aggregates data from multiple security vendors to provide comprehensive domain reputation analysis.

2. Google Safe Browsing: <https://safebrowsing.google.com/>

Google Safe Browsing protects users from malware, phishing, and other threats.

3. Google CrUX (Chrome User Experience Report):

<https://developers.google.com/web/tools/chrome-user-experience-report>

CrUX provides real user measurement data for millions of websites, including Core Web Vitals metrics:

- LCP (Largest Contentful Paint): Measures loading performance
- INP (Interaction to Next Paint): Measures interactivity
- CLS (Cumulative Layout Shift): Measures visual stability
- FCP (First Contentful Paint): Measures initial page load

4. For review criteria and detailed information:

This technical datasheet is based on official data from Google PageSpeed Insights, the Chrome UX Report, and Google Safe Browsing. All measurements reflect the publicly accessible version of the website at the time of scanning and may vary over time. For full criteria and methodology, see:

<https://www.nightrush.com/en/editorial-guideline/#how-we-review-casinos-and-sportsbooks>

5. Report ID: 209B5AD794B37136

Report generated on 2026-03-30 11:18:53

This report is based on data available at the time of generation and may not reflect real-time status.