



Casino Security & Performance Report of lex.casino

Powered by NightRush.com

Domain:	lex.casino
Report Generated:	2026-05-13 08:49:57
Report ID:	DC8F171CA74E0FA6

VirusTotal Analysis

Reputation:	0 (Neutral)
Security Vendors:	92 vendors analyzed
Harmless:	58
Malicious:	0
Suspicious:	0
Undetected:	34

TLS/SSL Information

TLS Version:	TLSv1.2
Cipher Suite:	ECDHE-ECDSA-CHACHA20-POLY1305
SSL Issuer Organization:	Google Trust Services

Google Safe Browsing

Status:	■ Safe (No data available - considered safe)
----------------	--

Google CrUX (Chrome User Experience)

Overall Rating: Poor

Current Performance Status:

Loading Performance:	Needs Improvement
Interactivity:	Needs Improvement
Visual Stability:	Poor

Historical Trend Analysis:

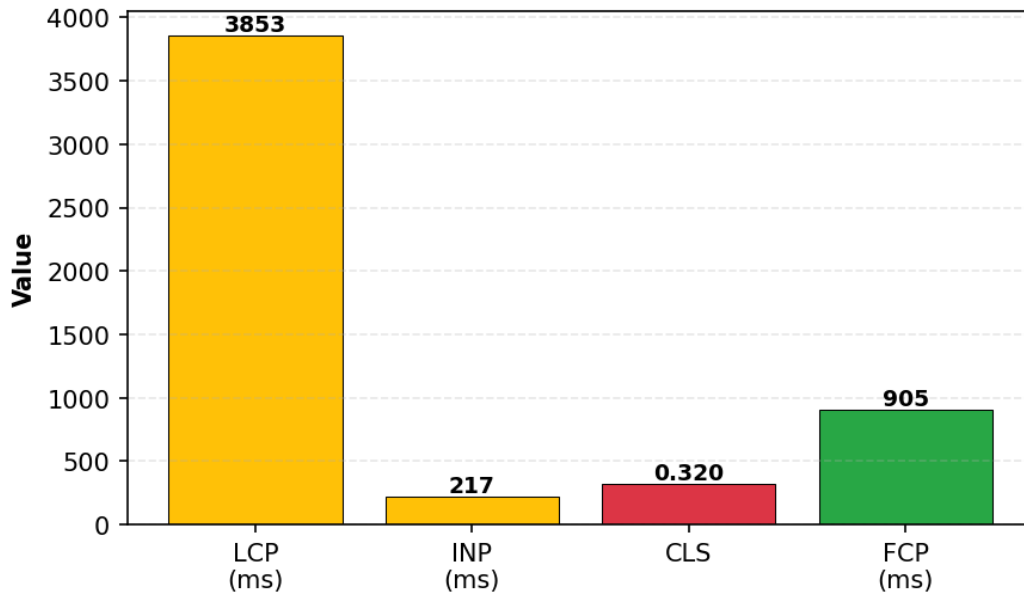
Loading Performance Trend:	Stable
Interactivity Trend:	Stable
Visual Stability Trend:	Stable

Current Metrics:

LCP (Largest Contentful Paint):	3853 ms (Needs Improvement)
INP (Interaction to Next Paint):	217 ms (Needs Improvement)
CLS (Cumulative Layout Shift):	0.320 (Poor)
FCP (First Contentful Paint):	905 ms (Good)

Current Metrics Visualization:

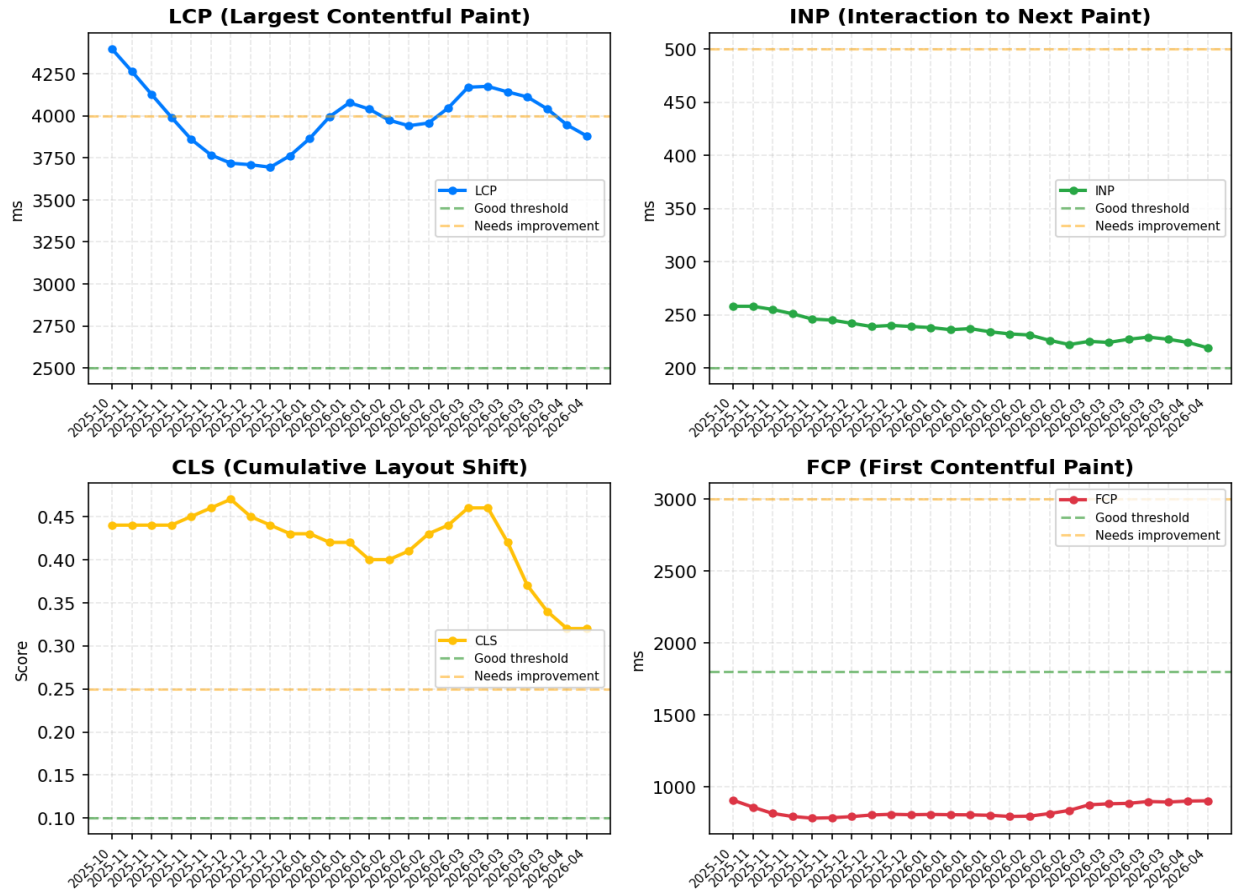
Current Core Web Vitals Metrics



Historical Data (25 periods):

Historical Trends Visualization:

Historical Core Web Vitals Trends



Period Details:

Period	LCP (ms)	INP (ms)	CLS	FCP (ms)
2025-10-26	4397	258	0.440	907
2025-11-02	4264	258	0.440	859
2025-11-09	4127	255	0.440	815
2025-11-16	3991	251	0.440	794
2025-11-23	3860	246	0.450	782
2025-11-30	3767	245	0.460	785
2025-12-07	3718	242	0.470	793
2025-12-14	3709	239	0.450	804

2025-12-21	3694	240	0.440	809
2025-12-28	3763	239	0.430	806
2026-01-04	3866	238	0.430	808
2026-01-11	3995	236	0.420	806
2026-01-18	4078	237	0.420	805
2026-01-25	4040	234	0.400	802
2026-02-01	3974	232	0.400	794
2026-02-08	3941	231	0.410	796
2026-02-15	3957	226	0.430	814
2026-02-22	4047	222	0.440	836
2026-03-01	4170	225	0.460	875
2026-03-08	4175	224	0.460	882
... and 5 more periods				

References & Footnotes

1. VirusTotal: <https://www.virustotal.com/>

VirusTotal aggregates data from multiple security vendors to provide comprehensive domain reputation analysis.

2. Google Safe Browsing: <https://safebrowsing.google.com/>

Google Safe Browsing protects users from malware, phishing, and other threats.

3. Google CrUX (Chrome User Experience Report):

<https://developers.google.com/web/tools/chrome-user-experience-report>

CrUX provides real user measurement data for millions of websites, including Core Web Vitals metrics:

- LCP (Largest Contentful Paint): Measures loading performance
- INP (Interaction to Next Paint): Measures interactivity
- CLS (Cumulative Layout Shift): Measures visual stability
- FCP (First Contentful Paint): Measures initial page load

4. For review criteria and detailed information:

This technical datasheet is based on official data from Google PageSpeed Insights, the Chrome UX Report, and Google Safe Browsing. All measurements reflect the publicly accessible version of the website at the time of scanning and may vary over time. For full criteria and methodology, see:

<https://www.nightrush.com/en/editorial-guideline/#how-we-review-casinos-and-sportsbooks>

5. Report ID: DC8F171CA74E0FA6

Report generated on 2026-05-13 08:49:57

This report is based on data available at the time of generation and may not reflect real-time status.