



Casino Security & Performance Report of legzo.casino

Powered by NightRush.com

Domain:	legzo.casino
Report Generated:	2026-04-01 15:23:51
Report ID:	2970A5CF2F57835A

VirusTotal Analysis

Reputation:	0 (Neutral)
Security Vendors:	94 vendors analyzed
Harmless:	60
Malicious:	0
Suspicious:	0
Undetected:	34

TLS/SSL Information

TLS Version:	TLSv1.2
Cipher Suite:	ECDHE-ECDSA-CHACHA20-POLY1305
SSL Issuer Organization:	Google Trust Services

Google Safe Browsing

Status:	■ Safe (No data available - considered safe)
----------------	--

Google CrUX (Chrome User Experience)

Overall Rating: Poor

Current Performance Status:

Loading Performance:	Poor
Interactivity:	Needs Improvement
Visual Stability:	Needs Improvement

Historical Trend Analysis:

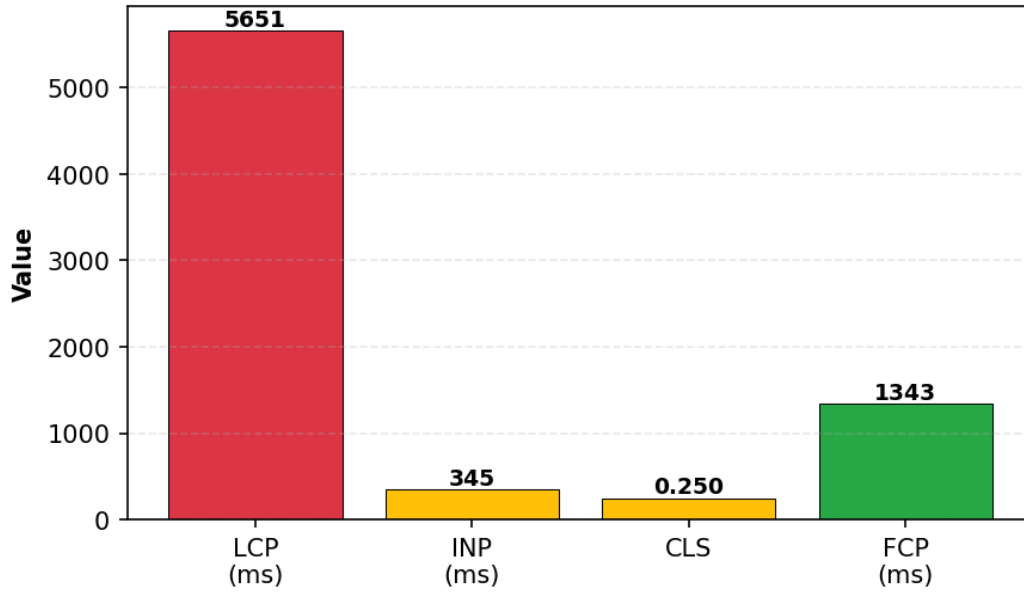
Loading Performance Trend:	Stable
Interactivity Trend:	Stable
Visual Stability Trend:	Stable

Current Metrics:

LCP (Largest Contentful Paint):	5651 ms (Poor)
INP (Interaction to Next Paint):	345 ms (Needs Improvement)
CLS (Cumulative Layout Shift):	0.250 (Needs Improvement)
FCP (First Contentful Paint):	1343 ms (Good)

Current Metrics Visualization:

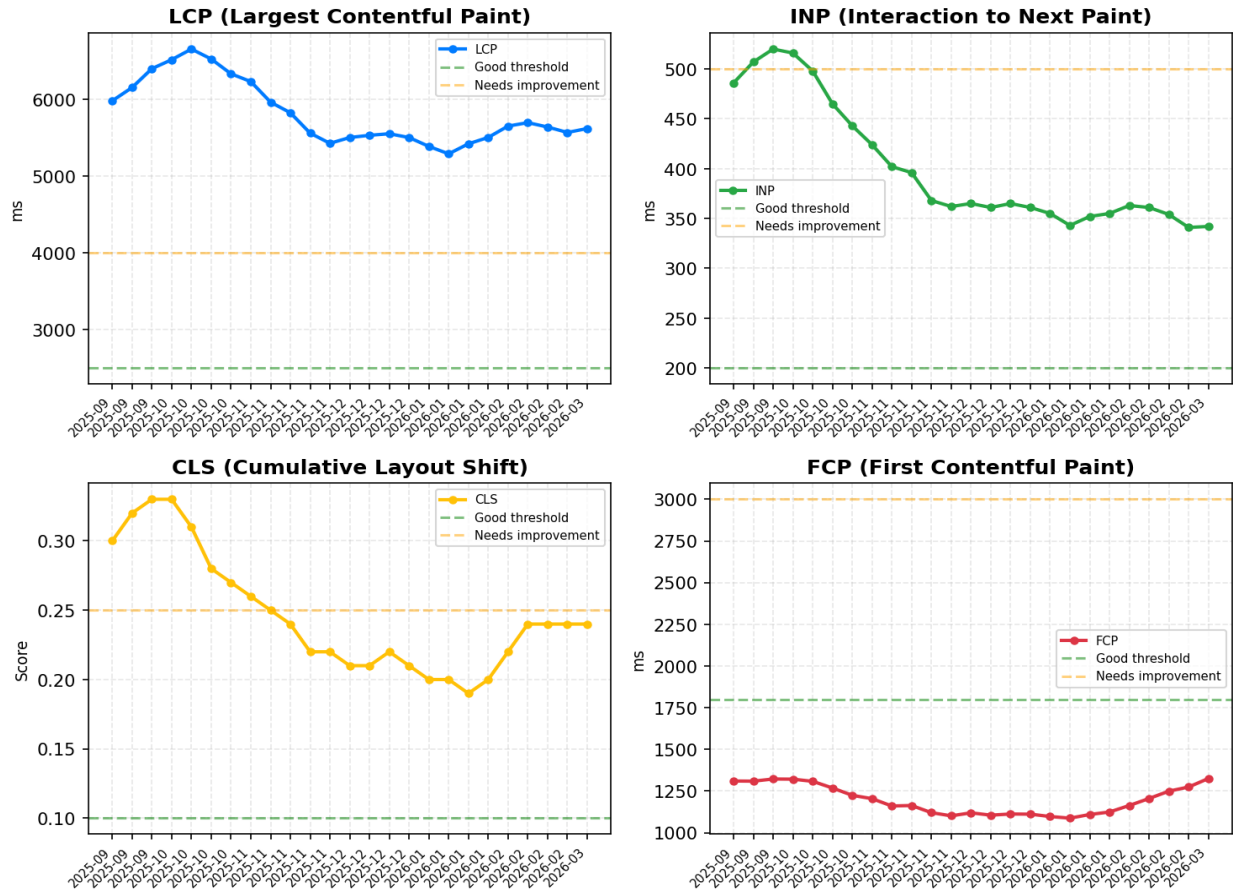
Current Core Web Vitals Metrics



Historical Data (25 periods):

Historical Trends Visualization:

Historical Core Web Vitals Trends



Period Details:

Period	LCP (ms)	INP (ms)	CLS	FCP (ms)
2025-09-14	5985	486	0.300	1310
2025-09-21	6158	507	0.320	1309
2025-09-28	6404	520	0.330	1322
2025-10-05	6521	516	0.330	1321
2025-10-12	6660	498	0.310	1308
2025-10-19	6530	465	0.280	1268
2025-10-26	6337	443	0.270	1224
2025-11-02	6236	424	0.260	1204

2025-11-09	5967	402	0.250	1160
2025-11-16	5829	396	0.240	1163
2025-11-23	5563	368	0.220	1120
2025-11-30	5430	362	0.220	1101
2025-12-07	5506	365	0.210	1119
2025-12-14	5535	361	0.210	1105
2025-12-21	5555	365	0.220	1112
2025-12-28	5506	361	0.210	1111
2026-01-04	5390	355	0.200	1097
2026-01-11	5293	343	0.200	1087
2026-01-18	5424	352	0.190	1109
2026-01-25	5507	355	0.200	1124
... and 5 more periods				

References & Footnotes

1. VirusTotal: <https://www.virustotal.com/>

VirusTotal aggregates data from multiple security vendors to provide comprehensive domain reputation analysis.

2. Google Safe Browsing: <https://safebrowsing.google.com/>

Google Safe Browsing protects users from malware, phishing, and other threats.

3. Google CrUX (Chrome User Experience Report):

<https://developers.google.com/web/tools/chrome-user-experience-report>

CrUX provides real user measurement data for millions of websites, including Core Web Vitals metrics:

- LCP (Largest Contentful Paint): Measures loading performance
- INP (Interaction to Next Paint): Measures interactivity
- CLS (Cumulative Layout Shift): Measures visual stability
- FCP (First Contentful Paint): Measures initial page load

4. For review criteria and detailed information:

This technical datasheet is based on official data from Google PageSpeed Insights, the Chrome UX Report, and Google Safe Browsing. All measurements reflect the publicly accessible version of the website at the time of scanning and may vary over time. For full criteria and methodology, see:

<https://www.nightrush.com/en/editorial-guideline/#how-we-review-casinos-and-sportsbooks>

5. Report ID: 2970A5CF2F57835A

Report generated on 2026-04-01 15:23:51

This report is based on data available at the time of generation and may not reflect real-time status.